



SAVE THESE INSTRUCTIONS - READ ALL INSTRUCTIONS CAREFULLY

WARNING



READ AND FOLLOW ALL SAFETY INSTRUCTIONS

- For indoor use only.
- Do not let the power cords touch hot surfaces.
- Do not install near gas or electric heaters.
- Use caution when servicing batteries. Battery acid can cause burns the skin and the eyes. If acid comes in contact with the skin or eyes, rinse affected area with fresh water and contact a physician immediately.
- Equipment should be mounted in locations and at heights where unauthorized personnel will not readily subject it to tampering.
- The use of accessory equipments is not recommended by the manufacturer, it may cause an unsafe condition, and will void the unit's warranty.
- Do not use this equipment other than intended purpose.
- Servicing of this equipment should be performed by a qualified service technician.

FOR YOUR SAFETY, PLEASE MAKE SURE THAT:

- All electrical connections comply with local codes and regulations, and to the Canadian electrical code.
- Disconnect the power to the fuse or circuit breaker before installation or during maintenance.
- Charge the battery for 24 hours before first use.

CIRCUITRY

120V AC 50/60 Hz	Input wattage: 3W	Working voltage: 120-347V AC 50/60 Hz
	Input current: 0.02 A	Recharge time: 20 h
	Efficiency: 0.98 P	Output wattage: 1W
347V AC 50/60 Hz		Built-in LED: Ultra bright LEDs
	Input wattage: 4W	5 x 12 white LEDs
	Input current: 0.02 A	Emergency duration: ≥ 2 h
	Efficiency: 0.92 P	Lead-acid battery: 3.6V/1000 mAh
		Fuse: 350V AC 0.5A
PS: Battery voltage is negative relative to input wattage.		

**Installation Instructions
WALLMOUNT**

1.1 Pass the AC supply wires (unswitched 24 hour) at the rated voltage passing through a junction box (not supplied), that was previously installed in accordance with all applicable code and standards. Leave a minimum of 8 inches of slack on the wire. This circuit should NOT be energized / live at this time.

1.2 Remove the faceplate. Remove and discard canopy kit located inside the sign cavity(Fig.1).

1.3 For installation directly over an electrical junction box, the sign is supplied with universal spider knockouts are stamped into the top and side for surface wire conduit connection (Fig.3) Knock out the appropriate holes and bring wires through the hole and outside the sign.

1.4 For installation directly over the electrical junction box, the sign is supplied with the universal spider knockouts and keyhole slots stamped into the back of the powerpack. Alternatively, conduit knockout are stamped into steel frame rear cover for surface wire conduit connection. Knock out the appropriate hole(s) and bring wires through the hole(s) and into the powerpack (Fig.3)

1.5 Mount the unit securely into place. Do not rely on the electrical connections as the only support for the unit: use supplied keyhole mounting slots (Fig.2).

1.6 Make the proper wiring connections between the AC supply and the unit's transformer: black and white wires - 120 - 347V AC; Green wire - ground:(Fig.3). Brown is provided instead of red for special voltages(Fig.3,4).

INSULATE UNUSED WIRE! Connect the ground to supplied green ground wire in accordance with local codes. Reassemble all wire connections and connectors. **CAUTION!** Failure to insulate unused wire may result in a shock hazard or unsafe condition as well as equipment failure.

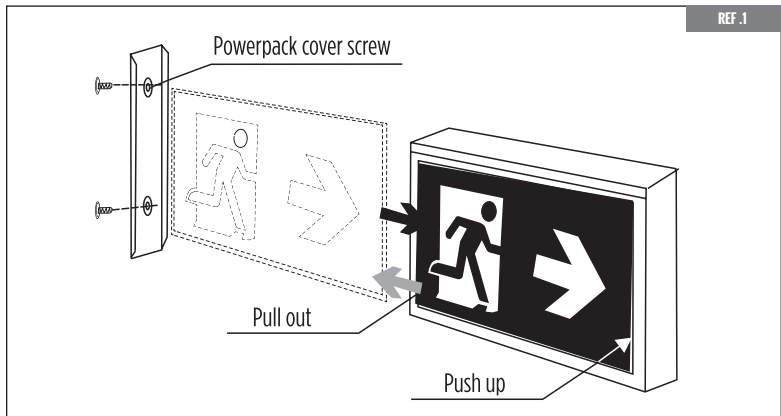
1.7 Secure all internal wires.

1.8 Mount the sign securely into place.

1.9 Take off the protective plastic on the front cover before installing (Fig.2).

1.10 Slide the faceplate into the sign frame, then replace and secure the face plate with screw(Fig.1).

1.11 Turn on AC the power supply.



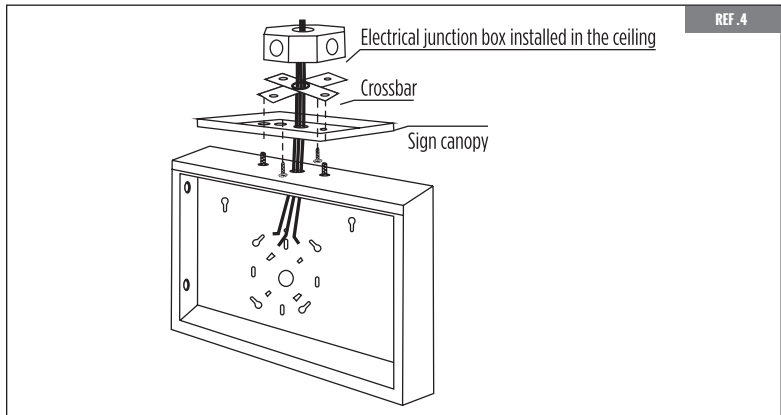
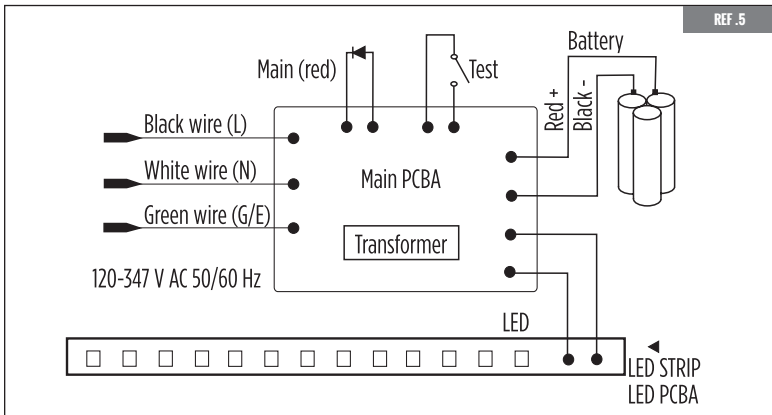
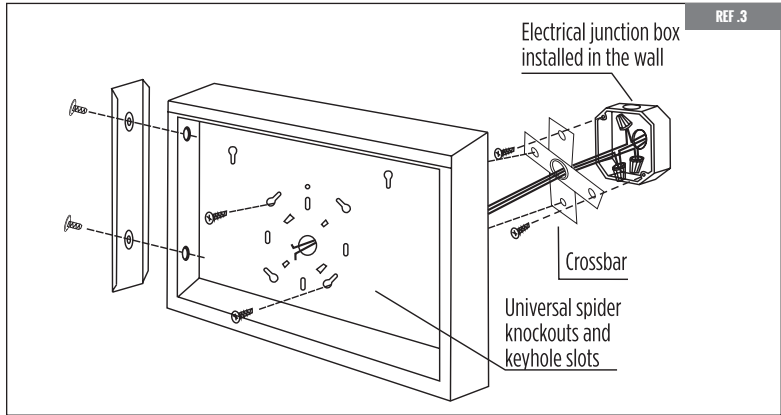


SAVE THESE INSTRUCTIONS - READ ALL INSTRUCTIONS CAREFULLY

CEILING OR END MOUNT

- 2.1 Follow steps 1 to 3 of wall mounting except DO NOT discard canopy kit located inside the sign.
- 2.2 A single wire pass-thru and a pair of canopy screw knockouts are stamped into the top and also the end of the sign. Knock out the appropriate set of three holes: top holes for ceiling mount or end holes for end wall mount (Fig.4).
- 2.3 Feed all the external wiring into the sign through the wire pass-thru hole.
- 2.4 Follow steps 4 to 11 of wall mounting installation to complete the installation.

NOTE: Secure the canopy to the sign using the supplied hardware. Mount the sign securely to the wall or ceiling. The hole spacing in the canopy is designed to fit most standard electrical junction box. A steel, universal spider plate is supplied to allow mounting to alternate size/type boxes (Fig.5)



OPERATION - SELF-POWERED (BATTERY)

1. To test, depress the TEST button. The AC indicator will go out and the LEDs will switch to battery power.
2. Release the TEST button. The LEDs will switch back to AC power and the AC indicator will come on.

MAINTENANCE

1. Code requires that the equipment be tested every 30 days for 30 seconds, and that written records be maintained for all test results and repairs. Further more, the equipment is to be tested once a year for the required duration per code. The battery is to be replaced or the equipment repaired whenever the equipment fails to operate as intended during the test duration. the manufacturer strongly recommends compliance with all code requirements.
2. Clean the front cover on a regular basis to provide maximum light distribution in case of an emergency.

NOTE: The servicing of any parts should be performed solely by a qualified service technician. The use of replacement parts not furnished by the manufacturer may cause equipment failure and will void the warranty.

TROUBLESHOOTING - THE DOES NOT LIGHT UP / TURN ON AT ALL

1. Check the AC power supply - be sure the unit has 24 hour AC supply (unswitched).
2. Check AC connector. The transformer / capacitor input power assembly is connected to the LED circuit board with a plastic connector. Ensure that this connector is firmly plugged into the LED circuit board. The connector will only lock into place when inserted with the correct orientation.
3. Check AC connections to transformer / capacitor assembly. Ensure that input voltage wiring matches the markings on the transformer / capacitor assembly wires being used.
4. AC supply and connections are OK and LEDs fail to light: replace LED board assembly.

THE SIGN TURNS ON DIM WHEN THE AC POWER IS ON

5. Check AC connections to transformer / capacitor assembly. Ensure that input voltage wiring matches the markings on the transformer / capacitor assembly wires being used.
6. AC supply and connections are OK and LEDs fail to light: replace LED board assembly.

THE SIGN COMES ON WHEN THE BATTERY IS FIRST CONNECTED (NO AC)

This is normal when the battery has enough charge to power the LEDs. The sign will remain lit until the battery is discharged.

THE SIGN COMES ON DIM WHEN THE TEST BUTTON IS PRESSED

7. Battery is severely discharged. Allow 24 hours for recharge and then retest. **NOTE:** This could be the result of a switched AC supply to the unit (which has been turned off at some point), a battery with a shorted cell, an old battery which has been discharged due to a long power outage and is not yet fully charged.
8. If LEDs are still dim on test, replace battery.